

# AMALFI

idea  
ceramica

Dress Your Home

Rivestimento



ONLY  
\$1



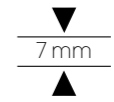




# AMALFI

Bicottura tradizionale  
 Traditional double fired  
 Bi-cuisson traditionnelle  
 Zweibrandfliesen

Monocalibro / Monocaliber / Monocalibre / In einem werkmass



25x40  
 10"x16"

FORMATO Size	SPESSORE Thickness	SCATOLE Boxes			PALETTE Pallets		
		pcs	m <sup>2</sup>	kg	box	m <sup>2</sup>	kg
25x40 Conchiglia	7	16	1,60	19,52	54	86,40	1054
25x40 Fondi COLORATI	7	16	1,60	19,52	36	57,60	702
25x40 MAIOLICA	7	16	1,60	19,52	36	57,60	702
25x40 ONDA	7	14	1,40	19,20	36	50,40	691
3,5x40 LISTELLO	7	8	-	-	-	-	-
5x40 LONDON	-	8	-	-	-	-	-

Imballi / Pesì  
 [Packaging / Weights]



















25X40

# Amalfi

Glossy  
LUCIDO

7mm

Onda Acqua AM210M █ 60



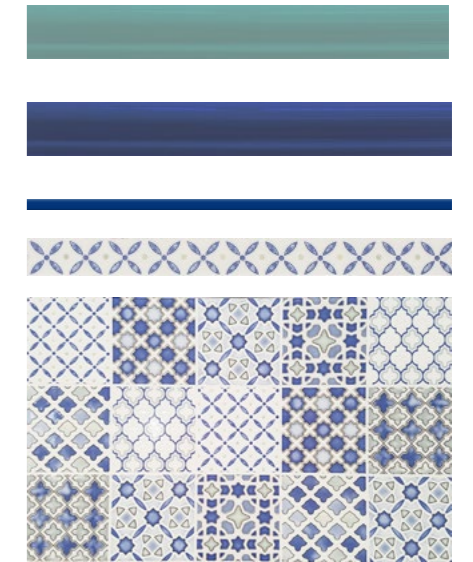
Acqua AM200 █ 56



Onda Mare AM410M █ 60



Mare AM400 █ 56



- AM700 MAIOLICA Acqua / 25x40 █ 60
- AM201 LISTELLO Acqua / 3,5x40 █ 11
- UR008 Stick Electric Blue / 1x60 █ 26
- AM407 London Mare / 5x40 █ 22
- AM207 London Acqua / 5x40 █ 22

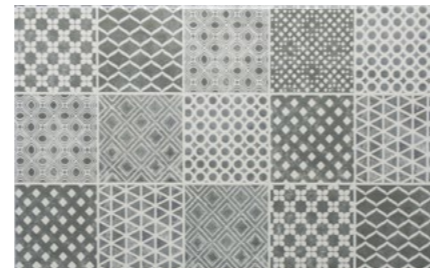
Onda Conchiglia AM510M █ 60



Conchiglia AM500 █ 46

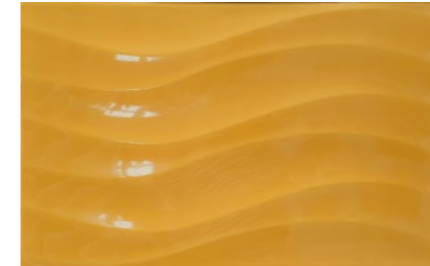


Grigio Perla AM800 █ 56



- AM810 MAIOLICA Grigio Perla / 25x40 █ 60
- AM201 LISTELLO Grigio Perla / 3,5x40 █ 11
- UR001 Stick Argento / 1x60 █ 26
- AM507 London Conchiglia / 5x40 █ 22
- AM807 London Grigio Perla / 5x40 █ 22

Onda Ambra AM110M █ 60



Ambra AM100 █ 56



Onda Malva AM310M █ 60



Malva AM300 █ 56



- AM600 MAIOLICA Ambra / 25x40 █ 60
- AM101 LISTELLO Ambra / 3,5x40 █ 11
- UR005 Stick Glicine / 1x60 █ 26
- AM307 London Malva / 5x40 █ 22
- AM107 London Ambra / 5x40 █ 22



## CARATTERISTICHE TECNICHE

Technical features  
Caractéristiques techniques  
Technische Eigenschaften

	Metodo di prova Testing method Méthode d'essai Prüfmethode	Valori prescritti International Standard Internationale Normwerte Valeurs Prescrites	Valori prescritti International Standard Internationale Normwerte Valeurs Prescrites	Valori medi Average Value Mittelwert Valeurs Moyennes
<b>Assorbimento d'acqua</b> Water absorption Absorption d'eau Wasseraufnahme	ISO 10545 - 3	≤ 0,5 %	> 10 %	<b>Conforme</b> In accordance Entsprechend
<b>Lunghezza e larghezza</b> Length and width Longueur et largeur Länge und Breite	ISO 10545 - 2	+/- 0,6 %	+/- 0,5 %	<b>Conforme</b> In accordance Entsprechend
<b>Spessore</b> Thickness Épaisseur Stärke	ISO 10545 - 2	+/- 5 %	+/- 10 %	<b>Conforme</b> In accordance Entsprechend
<b>Rettilineità degli spigoli</b> Straightness Équerage des angles Geradlinigkeit	ISO 10545 - 2	+/- 0,5 %	+/- 0,3 %	<b>Conforme</b> In accordance Entsprechend
<b>Ortogonalità</b> Rectangularity Orthogonalité Rechtwinkligkeit	ISO 10545 - 2	+/- 0,6 %	+/- 0,5 %	<b>Conforme</b> In accordance Entsprechend
<b>Planarità</b> Warpage Planéité Ebenflächigkeit	ISO 10545 - 2	+/- 0,5 %	+/- 0,5 % - 0,3%	<b>Conforme</b> In accordance Entsprechend
<b>Coefficiente di attrito (scivolosità)</b> Friction coefficient (slipperiness) Coefficient de friction (glissement) Reibungskoeffizient (Schlupfrigkeit)				
<b>Coefficiente dilatazione termica lineare</b> Coefficient of linear thermal-expansion Coefficient de dilatation thermique linéaire Lineare Wärmeausdehnung	ISO 10545 - 8	9 MK <sup>1</sup>		<b>7 MK<sup>1</sup></b>
<b>Resistenza alla flessione</b> Flexion resistance Résistance à la flexion Biegezugfestigkeit	ISO 10545 - 4	> 35 N/mm <sup>2</sup>	> 15 N/mm <sup>2</sup>	<b>Conforme</b> In accordance Entsprechend
<b>Resistenza all'abrasione profonda</b> Deep abrasion resistance Résistance à l'abrasion profonde Beständigkeit gegen Tiefenabrieb				
<b>Resistenza al gelo</b> Frost resistance Résistance au gel Frostwiderstandsfähigkeit	ISO 10545 - 12	Nessuna alterazione No alteration		<b>Conforme</b> In accordance Entsprechend
<b>Resistenza agli sbalzi termici</b> Thermal shock resistance Résistance aux écarts de température Temperaturwechselbeständigkeit	ISO 10545 - 9	Nessuna alterazione No alteration		<b>Conforme</b> In accordance Entsprechend
<b>Resistenza dei colori alla luce</b> Color resistance to light Résistance de la couleur à la lumière Lichtbeständigkeit	DIN 51094	Nessuna alterazione No alteration		<b>Conforme</b> In accordance Entsprechend
<b>Resistenza ai prodotti chimici</b> Chemical resistance Résistance aux produits chimiques Chemikalienfestigkeit	ISO 10545 - 13	Classe UB min	Classe GB min	<b>Conforme</b> In accordance Entsprechend
<b>Resistenza alle macchie</b> Stain resistance Résistance aux taches Flecken-Beständigkeit	ISO 10545 - 14	Classe 3 min	Classe 3 min	<b>Conforme</b> In accordance Entsprechend

UNI EN 14411 G  
Gruppo BIa GL

Pavimenti in gres porcellanato  
Porcelain wall and floor tiles

UNI EN 14411 L  
Gruppo BIII GL

Rivestimenti in bicottura  
Double firing wall tiles



Azienda  
Company



idea ceramica // by MoMa ceramiche Group



Finale Emila (MO) - Via Panaria Bassa 17/A - Italy

Tel. +39 0535 90401 / info@ideaceramica.biz

www.ideaceramica.net



A detailed botanical illustration of various tropical plants, including large palm-like leaves with prominent veins and clusters of small, light-colored flowers. The style is reminiscent of a scientific or artistic study of flora, with a muted color palette of greens, browns, and greys.

idea ceramica

Via Panaria Bassa 17/A  
41034 Finale Emilia (MO)  
Tel. +39 0535 90401  
Fax. +39 0535 762368

MADE IN ITALY

[info@ideaceramica.biz](mailto:info@ideaceramica.biz)

[www.ideaceramica.net](http://www.ideaceramica.net)