

# NAIF

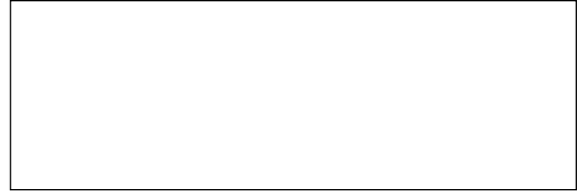
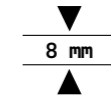


Dress Your Home

Rivestimento



# NAIF



25x75  
10"x29,5"

## Pasta Bianca / White body

L'impasto, essendo composto da materie prime ricche di ossido di titanio conferisce un grado di bianco alla piastrella che ricorda molto la preziosa porcellana. La bicottura in pasta bianca è un materiale pregiato che garantisce facilità di lavorazione.

The dough, being composed of raw materials rich in titanium oxide, gives a degree of whiteness to the tile which is very reminiscent of the refined porcelain. The double-fired white body is a precious material that guarantees ease of processing.

Die Mischung, die aus titanoxidreichen Rohstoffen besteht, verleiht der Fliese eine Nuance von Weiß, die sehr an kostbares Porzellan erinnert. Die Weißscherbige Zweibrandfliese ist ein wertvolles Material, das eine einfache Verarbeitung garantiert.

La pâte, constituée de matières premières riches en oxyde de titane, donne au carreau un degré de blancheur qui rappelle beaucoup la précieuse porcelaine. La cuisson en pâte blanche est un matériau précieux qui garantit une facilité de traitement.

Size Formato	SCATOLE Boxes			PALETTE Pallets		
	Pz	m <sup>2</sup>	Kg	Box	m <sup>2</sup>	Kg
FONDI 25X75	8	1,50	19,20	45	67,50	864,00
CERCHI	8	1,50	19,20	45	67,50	864,00
FLORA	8	1,50	19,20	45	67,50	864,00
ACQUERELLO	8	1,50	19,20	45	67,50	864,00
CASCATA	4	0,75	9,60	-	-	-

Imballi / Pesi  
[Packaging / Weights]





THE DRAWING CENTER  
Jean Vendome



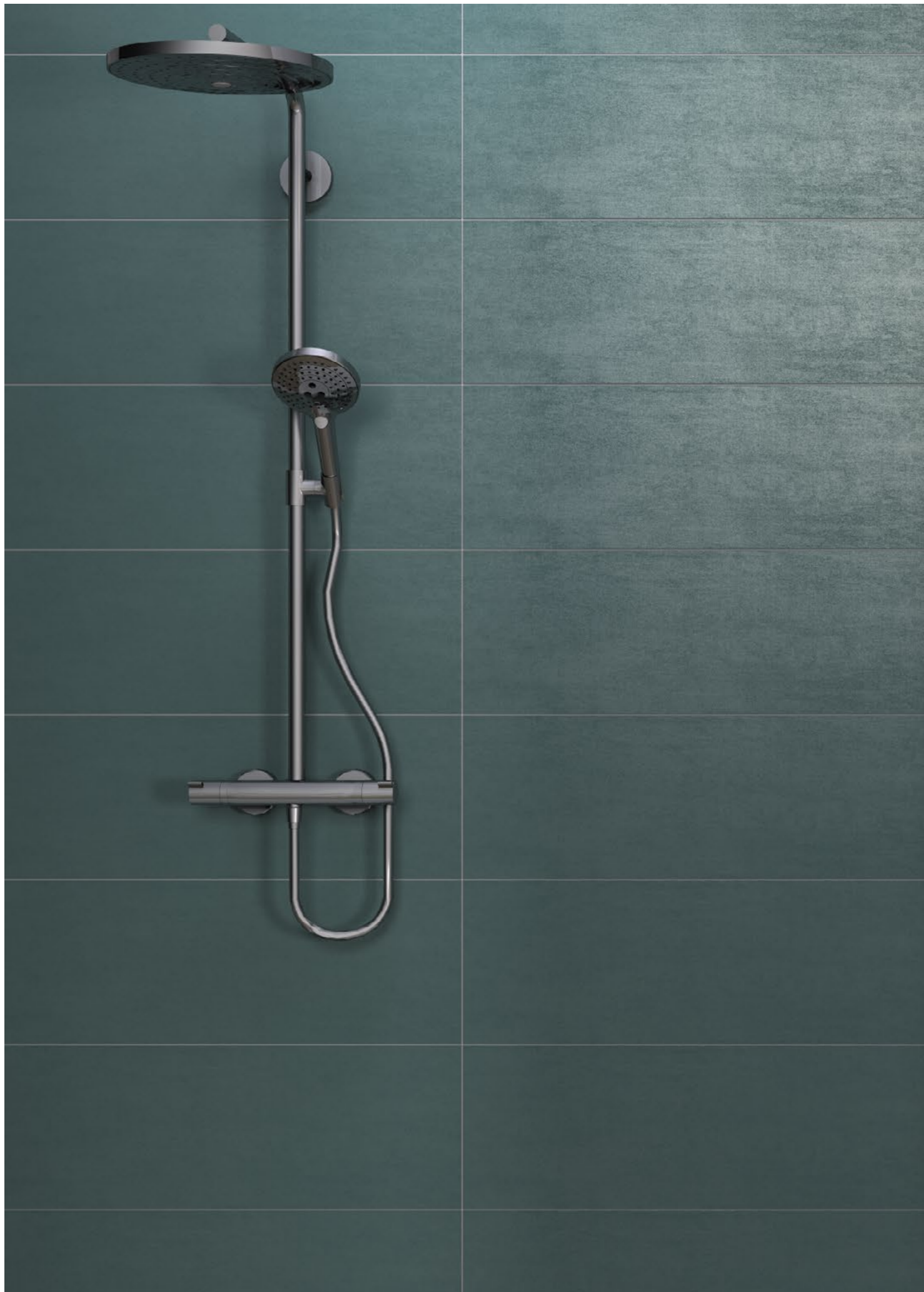




Acciaio + Cerchi Dark + Juta



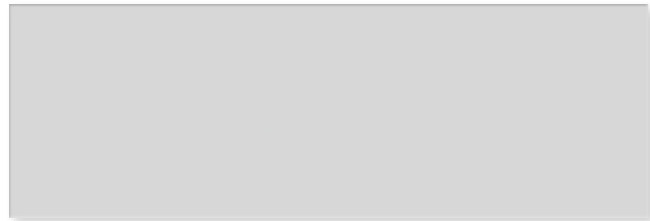
Aquamarine + Cerchi Light + Juta





# Naif

▼  
8 mm  
▲



INAR01 - NAIF - JUTA BIANCA / 25x75 / (PB) ■ 71



INAR02 - NAIF - ACCIAIO / 25x75 / (PB) ■ 71



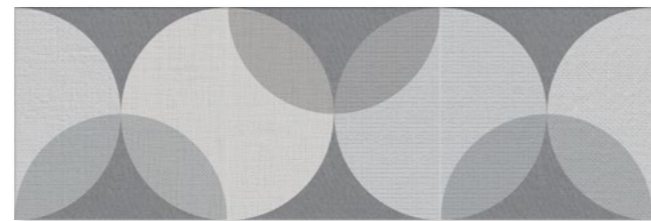
INAR03 - NAIF - AQUAMARINE / 25x75 / (PB) ■ 73



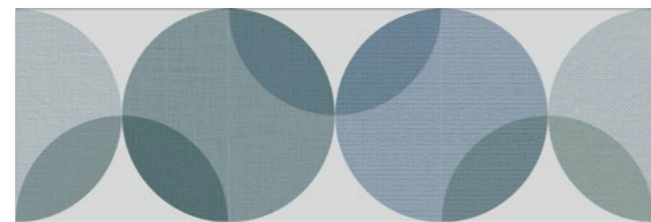
INAR04 - NAIF - VELLUTO BLU / 25x75 / (PB) ■ 73



INAR05 - NAIF - SMERALDO / 25x75 / (PB) ■ 73



INAD02 - CERCHI DARK / 25x75 / (PB) ■ 77



INAD01 - CERCHI LIGHT / 25x75 / (PB) ■ 77



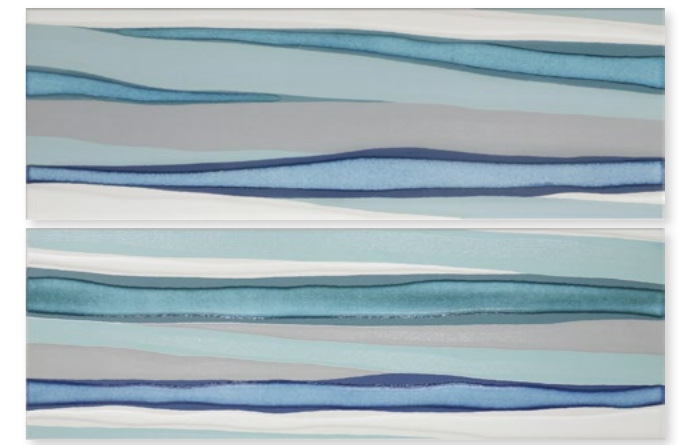
INAD03 - COMP. ACQUERELLO [A+B+C+D] / 25x75 / (PB) ■ 134

\*Nota: prezzo per scatola da 8 pz.



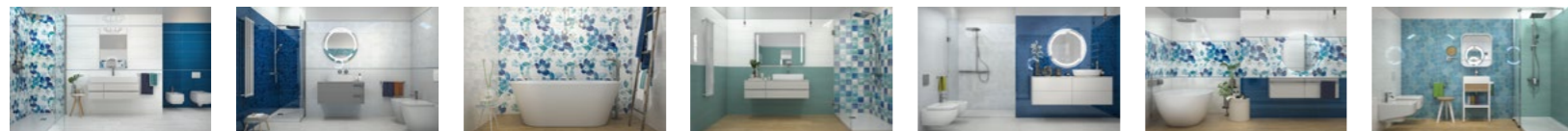
INAD05 - COMP. FLORA [A+B] / 25x75 / (PB) ■ 134

\*Nota: prezzo per scatola da 8 pz.



INAD04 - COMP. CASCATA [A+B] / 25x75 / (PB) ■ 118

\*Nota: prezzo per scatola da 4 pz.



## VIRTUAL SHOWROOM



[www.ideaceramica.net/naif](http://www.ideaceramica.net/naif)

Cod. \*NB: prezzo per scatola completa.  
\*NB: price per full box.



**CARATTERISTICHE TECNICHE**

Technical features  
Caractéristiques techniques  
Technische Eigenschaften

**PAVIMENTO**

Floor tile

**RIVESTIMENTO**

Wall tile



Azienda  
Company



idea ceramica // by MoMa ceramiche Group

	Metodo di prova Testing method Méthode d'essai Prüfmethode	Valori prescritti International Standard Internationale Normwerte Valeurs Prescrites	Valori prescritti International Standard Internationale Normwerte Valeurs Prescrites	Valori medi Average Value Mittelwert Valeurs Moyennes
<b>Assorbimento d'acqua</b> Water absorption Absorption d'eau Wasseraufnahme	ISO 10545 - 3	≤ 0,5 %	> 10 %	<b>Conforme</b> In accordance Entsprechend
<b>Lunghezza e larghezza</b> Length and width Longueur et largeur Länge und Breite	ISO 10545 - 2	+/- 0,6 %	+/- 0,5 %	<b>Conforme</b> In accordance Entsprechend
<b>Spessore</b> Thickness Épaisseur Stärke	ISO 10545 - 2	+/- 5 %	+/- 10 %	<b>Conforme</b> In accordance Entsprechend
<b>Rettilineità degli spigoli</b> Straightness Équerage des angles Geradlinigkeit	ISO 10545 - 2	+/- 0,5 %	+/- 0,3 %	<b>Conforme</b> In accordance Entsprechend
<b>Ortogonalità</b> Rectangularity Orthogonalité Rechtwinkligkeit	ISO 10545 - 2	+/- 0,6 %	+/- 0,5 %	<b>Conforme</b> In accordance Entsprechend
<b>Planarità</b> Warpage Planéité Ebenflächigkeit	ISO 10545 - 2	+/- 0,5 %	+/- 0,5 % - 0,3%	<b>Conforme</b> In accordance Entsprechend
<b>Coefficiente di attrito (scivolosità)</b> Friction coefficient (slipperiness) Coefficient de friction (glissement) Reibungskoeffizient (Schlupfrigkeit)				
<b>Coefficiente dilatazione termica lineare</b> Coefficient of linear thermal-expansion Coefficient de dilatation thermique linéaire Lineare Wärmeausdehnung	ISO 10545 - 8	9 MK <sup>1</sup>		<b>7 MK<sup>1</sup></b>
<b>Resistenza alla flessione</b> Flexion resistance Résistance à la flexion Biegezugfestigkeit	ISO 10545 - 4	> 35 N/mm <sup>2</sup>	> 15 N/mm <sup>2</sup>	<b>Conforme</b> In accordance Entsprechend
<b>Resistenza all'abrasione profonda</b> Deep abrasion resistance Résistance à l'abrasion profonde Beständigkeit gegen Tiefenabrieb				
<b>Resistenza al gelo</b> Frost resistance Résistance au gel Frostwiderstandsfähigkeit	ISO 10545 - 12	Nessuna alterazione No alteration		<b>Conforme</b> In accordance Entsprechend
<b>Resistenza agli sbalzi termici</b> Thermal shock resistance Résistance aux écarts de température Temperaturwechselbeständigkeit	ISO 10545 - 9	Nessuna alterazione No alteration		<b>Conforme</b> In accordance Entsprechend
<b>Resistenza dei colori alla luce</b> Color resistance to light Résistance de la couleur à la lumière Lichtbeständigkeit	DIN 51094	Nessuna alterazione No alteration		<b>Conforme</b> In accordance Entsprechend
<b>Resistenza ai prodotti chimici</b> Chemical resistance Résistance aux produits chimiques Chemikalienfestigkeit	ISO 10545 - 13	Classe UB min	Classe GB min	<b>Conforme</b> In accordance Entsprechend
<b>Resistenza alle macchie</b> Stain resistance Résistance aux taches Flecken-Beständigkeit	ISO 10545 - 14	Classe 3 min	Classe 3 min	<b>Conforme</b> In accordance Entsprechend

UNI EN 14411 G  
Gruppo BIa GL

Pavimenti in gres porcellanato  
Porcelain wall and floor tiles

UNI EN 14411 L  
Gruppo BIII GL

Rivestimenti in bicottura  
Double firing wall tiles



We are here!  
Noi siamo qui!

Finale Emila (MO) - Via Panaria Bassa 17/A - Italy

Tel. +39 0535 90401 / info@ideaceramica.biz

www.ideaceramica.net

A detailed botanical illustration of various tropical plants, including large palm-like leaves with prominent veins and clusters of small, light-colored flowers. The style is reminiscent of a scientific or artistic study, with fine lines and a muted color palette of greens, browns, and greys.

idea ceramica

Via Panaria Bassa 17/A  
41034 Finale Emilia (MO)  
Tel. +39 0535 90401  
Fax. +39 0535 762368

MADE IN ITALY

[info@ideaceramica.biz](mailto:info@ideaceramica.biz)

[www.ideaceramica.net](http://www.ideaceramica.net)